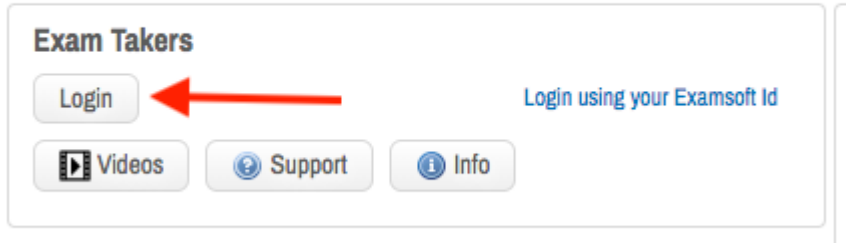


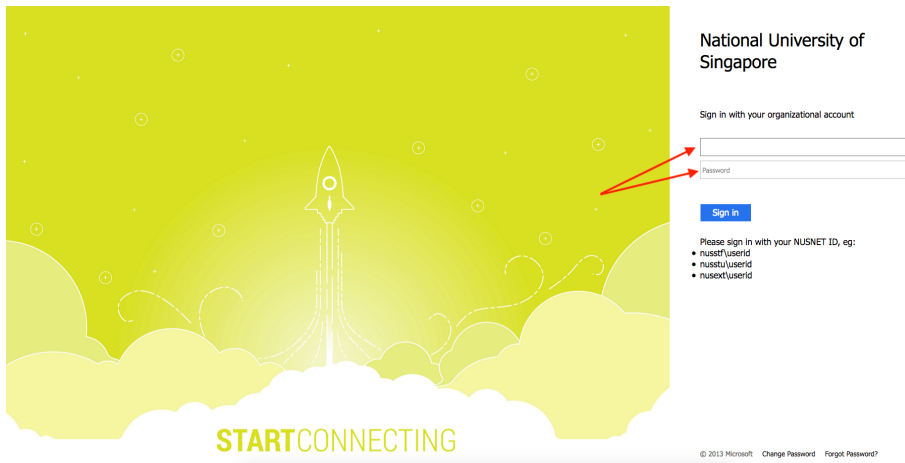
# How do I login to the Examssoft web portal?

1. Go to URL <https://examssoft.com/nus>
2. Click on the **Login** button under **Exam Takers**

## National University of Singapore



3. You need to log in using your **NUSNET ID** and **password** in this next page; please key in "**nusstu**" followed by your student ID, i.e. **nusstu0123456**.  
If you forgot or wish to change your NUSNET password, check [How do I reset my NUSNET password?](#)



4. You are now logged into the Examssoft web portal to download Exemplify installer or view your past assessment upload history.

